

# Craig & Penllyn Residents' Association



## Village Newsletter

**Spring 2014**



### Inside this issue:

<b>Weekday Bus Services</b>	<b>6</b>
<b>Neighbourhood Watch</b>	<b>7</b>
<b>Christmas Lights, Noah's Ark Appeal and Party</b>	<b>10</b>
<b>New Year's Day Walk</b>	<b>11</b>
<b>Penllyn Church News</b>	<b>11</b>
<b>Tŷ Hafan</b>	<b>14</b>
<b>OTAGO Classes</b>	<b>15</b>
<b>And much, much more</b>	

### Dates for your Diary

<b>Quiz &amp; Curry Night</b>	<b>5<sup>th</sup> April</b>
<b>Village Spring Clean</b>	<b>6<sup>th</sup> April</b>
<b>Craig &amp; Penllyn Joint Association AGM</b>	<b>7<sup>th</sup> May</b>
<b>Penllyn Dog Show</b>	<b>6<sup>th</sup> Sept.</b>

Craig & Penllyn



We're on the Web!  
[www.penllyn.org.uk](http://www.penllyn.org.uk)



### *Editor's Note*

*As I write spring has arrived—I wonder what the weather will be like by the time you receive this issue! However we already have plans to enjoy the better weather in the village.*

*I occasionally send out notices by email. If you would like to be included, please send me your email address ([val.t.caple@care4free.net](mailto:val.t.caple@care4free.net)). You can also catch up with news by visiting the website.*

*Please let me have articles, comments, congratulations etc. for the next issue of the Newsletter by*

May 1st 2014

*Val*

Editor: Val T. Caple, Milestone, Penllyn, Cowbridge, CF71 7RQ

Tel: 01446 775794, Email: [val.t.caple@care4free.net](mailto:val.t.caple@care4free.net)

### **I would like to thank our sponsors:**

The Barley Mow,

Bridgework Ltd.,

Cowbridge Compost,

The Red Fox,

Russell Heath Accountants

**without whom this issue of the Newsletter would not have been possible**

I would also like to thank the Vale Council for Voluntary Services for advice, and for printing the Newsletter.

### **Wanted—Sponsors for the Village Newsletter and Website**

We have been very lucky to have the support of local businesses over the years who have given us financial help with the printing.

The charges are very reasonable. If you can help, please contact Jonathan Case, the Residents Association Treasurer, for prices on 01446 776462

## Joint Residents' Association & Village Hall Committees Message from the Chairman.

Dear all.

Spring is here. I hope you're successful in sticking to your New Year's resolutions. If staying fit and preventing falls is your aim, you might be interested in strength & balance classes. We are trying to establish them in the Village Hall. Look out for further announcements.

On Saturday, April 5th there is a Quiz & Curry night in the Village Hall, followed by the Village Spring clean / village litter pick the following day. Everybody is welcome.

From April onwards the Friends of the Winchfield will meet every 1st and 3rd Wednesday of each month to maintain the Winchfield surrounds and keep the Himalayan Balsam at bay.

More maintenance is required for the Parish Field. There will be plenty of opportunity to get involved.

Please join in. Everybody is welcome.

Enjoy the spring.

*Lars Tiessen, Chair Penllyn & Craig Penllyn Village Hall & Residents' Association, ChairJC@penllyn.org.uk*

### AGM

Please support us by attending the AGM in the Village Hall on 7th May

### Penllyn Village Hall

There are regular bookings for 3 or 4 evenings during the week, but we can fit in an early party and weekends are usually available. For a donation residents can borrow equipment from the Hall.

*Please contact Val on 775794 or val.t.caple@care4free.net for bookings*

### Marquee

Residents can borrow the Marquee (but not the six strong men required to put it up!) It must be collected from the Penllyn Estate barn.

Please contact Val on 775794 or val.t.caple@care4free.net for bookings

### February Meeting of Penllyn Community Council

The summary of the meeting includes:

#### Community Police Matters.

There was the theft of batteries from the Penllyn Estate. The matter was reported at the time of the incident and officers were able to stop and arrest on male person for this matter.

#### Vale of Glamorgan Council Liaison.

A number of matters relating to the poor state of local roads in the area were raised. Locations where Members considered repairs are required include:-  
The area between Hunters Ridge and the pumping station at Graig Penllyn;  
Blocked drains at the entrance to the Meadows, Penllyn.

Vacancies still exist for Ward members.

Date of next meeting 3<sup>rd</sup> March 2014.

*Clive Farrant (Clerk).*

## Penllyn & District WI



Our WI was well-represented at the Federation Christmas Carol Festival in St David's Hall, Cardiff on December 2<sup>nd</sup>, several members sang in the choir, other members supported them in the audience, and our banner was in evidence in the parade of WI banners.

At our December meeting Joyce James gave an interesting and informative talk on 'Christmas Customs', this was followed by a buffet prepared by the Committee.

We held a very successful Christmas Craft Fayre on Saturday 7<sup>th</sup> December, where a substantial amount of money was raised. Many thanks to everyone who supported us.

Some of our members attended the Link Carol Service on 12<sup>th</sup> December, joining with members of other WIs for an evening of lessons and carols. We also donated a tree to the Holy Cross Church Christmas Tree Festival.

Our first meeting of the new year was held on 7<sup>th</sup> January, when Marion Layton-Matthews gave an interesting and amusing talk about her experiences of taking pupils on school trips.

We held our post-Christmas Festive Meal at The Red Fox, Penllyn on 21<sup>st</sup> January, and enjoyed a pleasant evening.

Roy Gee, of Dinas Powys, was the speaker for our February meeting, his topic 'Walking with Elephants' was accompanied by a slide show, with wonderful close-up photography of elephants and other wild animals.

On 15<sup>th</sup> February our Darts Team took part in the Federation Darts Competition, unfortunately they were not amongst the winners, but they acquitted themselves well. Already they have started practising for next year's competition!

Three of our members attended a meeting in Ystradowen, to find out details of the competitions for this year's WI Show. The new year's craft evenings began on February 19<sup>th</sup>; once again we have begun to create items to enter in the Glamorgan WI Show in July.

On Saturday, 1<sup>st</sup> March we held a coffee morning, with a cake stall. We were pleased to welcome villagers and WI members and friends who joined us for 'Coffee and Welshcakes'.

At our meeting will be on Tuesday 4<sup>th</sup> March Richard Marks talked about 'Farming in Scotland and Argyll Wildlife'. On Saturday, 15<sup>th</sup> March we had a 'Patchwork Workshop', led by Jill Watkins.

New members are always warmly welcomed; we meet in the Village Hall, at 7.30pm, on the first Tuesday of every month (except August).

*For further information contact Novello 01656 674191, or Marjorie 01656647115.*

## Whist Drive and Raffle

Regular meetings are held in the Village Hall on the second Tuesday of each month at 7.30 pm to 9.45 pm and new members are very welcome. Money raised from the raffle is used to support St John's Church, Penllyn

*Please contact Anthony Powell (774170).*



Christmas Tree



Christmas Fayre



Christmas Dinner

## Penllyn Table Tennis Club

The Table Tennis Club is always ready to welcome new members. We meet at the Village Hall on a Monday nights at 8.00 pm. All levels welcome from absolute beginners to expert. Bats provided

*If you are interested in joining them contact Awen or Alun Evans (772291)*

## Cowbridge University of the Third Age

The Cowbridge U3A use the Penllyn Village Hall for some of their meetings, including Table Tennis, Bridge and Art. If you are interested in joining the U3A why not attend one of their monthly meetings — they meet on the second Wednesday of each month at the Cowbridge Town Hall at 2.00pm.

## Penllyn Tennis Club News

The AGM of the tennis club will take place at the Barley Mow at 8.00pm on the 9th April.

The meeting will be combined with the annual Wimbledon draw. Please note that to conform with the new regulations only British Tennis Members are eligible for the draw.

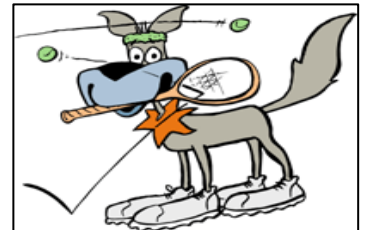
The annual spring clean of the courts will take place in March.

## Easter Coaching 2014 with Peter Booth

Kick start the tennis season with fun coaching sessions!!! Open to members and non members. Peter Booth will be running group coaching sessions at Craig Penllyn courts on:-

Monday 14<sup>th</sup>, Tuesday 15<sup>th</sup>, Wednesday 16<sup>th</sup> and Thursday 17<sup>th</sup> April as the follows:

9.30am to 10.30am	Under 8's - mini tennis
10.30am to 11.30am	8 to 12 years
11.30am to 12.30pm	8 to 16 years advanced
6pm to 7pm	Adult beginners
7pm to 8pm	Doubles Clinic



### How much?

£20 for the four hours of coaching. Cheques should be payable to Penllyn LTC.

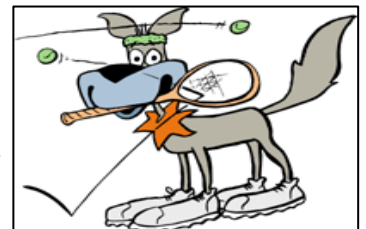
## Coaching with Ken East

Fun tennis coaching on Monday, 12<sup>th</sup> May and Monday, 19<sup>th</sup> May for the following age groups:-

4.30pm to 5.30pm	Under 8's - mini tennis
5.30pm to 6.30pm	Over 8's - full court
6.30pm to 7.30pm	Adults / Advanced juniors

This coaching is open to all. We welcome existing tennis club members and non members. Try tennis for the first time or improve your skills!

To book, please call Janet Booth 773594 or e mail [janlesboo@yahoo.co.uk](mailto:janlesboo@yahoo.co.uk)



### How Much?

The cost of this two hours of coaching is £8.

### Like it?

There will be more Monday coaching after the half term holiday from 30<sup>th</sup> May to 7<sup>th</sup> July at a cost of £24 for the 6 Monday sessions (same times as above).

## Membership

For this further 6 weeks of coaching we require you to join Penllyn Lawn Tennis Club. You will then receive a key to the courts and you can play whenever you like.

Subscriptions for 2013/2014 were:

Family	£77	Junior	£22
Couple	£66	Adult	£44

Subscriptions for 2014/2015 will be set at the forthcoming AGM and will be very similar to the rates above

To join, or rejoin, contact Peter Cole on 01446 774061

## Weekday Bus Services

With the loss of our daily bus service, the only option is the Greenlinks service which started in January.

Welsh concessionary bus passes will be accepted on the services. Child fares will also apply for these services. You do not need to be a member of Greenlinks to access the weekly bus services.

### G1 Service – Monday to Friday

The new service providing a link between Llantwit Major, Cowbridge and Bridgend Town Centre and will serve the villages of Llanmaes, Sigingstone, Llandow, Llysworney, Llanblethian, Pentre Meyrick, Penllyn, Craig Penllyn, City, Ruthin, St Mary Hill, Fferm Goch, Llangan, Treoes, Colwinston, Corntown and Ewenny.

There are guideline routes for each day which are flexible depending on demand. The service operates between 8.15 am and 6.15 pm. Passengers will be advised of their pickup times and locations.

To request a seat on this service please call 0800 294 1113 by 12 noon the day prior to travel at the latest

For more information see <http://www.valeofglamorgan.gov.uk> or pick up a leaflet in the Library



**Llantwit Major to  
Bridgend via  
Cowbridge and  
surrounding  
Villages**



**A demand responsive flexible service  
from 20 January 2014**

A new flexible bus service will operate Monday to Friday between 8:15am and 6:15pm and will provide a link between Llantwit Major, Cowbridge, Bridgend Town Centre and the surrounding villages as identified on the map.

There are guideline routes for each day which are flexible depending on demand.

To request a seat on this service please call the freephone number  
**0800 294 1113**  
between the hours of 09:00 – 13:00 Monday to Friday. (If no requests are received the service will not run)



**Fares on the G1 Service:**

Within the Vale of Glamorgan	
Adult Single £2	Return £3
Child Single £1	Return £1.50
To/from Bridgend	
Adult Single £3	Return £4
Child Single £1.50	Return £2
Welsh Concessionary Pass Holders FREE <small>(information correct as of January 2014)</small>	

Requests must be received by 12:00 (noon), at least one working day before transport is required. Passengers will be advised of their pick up times from agreed locations one working day prior to travel. Please note the pick up time may vary by up to 10 minutes either side of the agreed pick up time.

The service will not be available on bank/special holidays or between 24 Dec to 2 Jan inclusive. This information is available in different formats on request.






### ***Tax too taxing?***

### ***Too busy to complete the paperwork?***

### ***Need advice on managing or growing your business?***

At Russell Heath Accountants we offer a wide range of personal taxation and business accounting services at a realistic price.

For a free initial consultation, call our friendly, helpful team on 01446 772000 or visit our website at [www.russellheath.co.uk](http://www.russellheath.co.uk)



**RUSSELL HEATH  
ACCOUNTANTS**

- ☑1 *friendly*
- ☑2 *professional*
- ☑3 *knowledgeable*
- ☑4 *local*

Director: Russell Heath (ACMA)      Registered office: 15A High Street, Cowbridge, CF71 7RQ  
Registered Company no: 4869905

## Neighbourhood Watch



Your Neighbourhood Watch contacts are:

Graig Penllyn	Liz Madge	01446 773187
Penllyn	Ted Marker	01446 773006
Pentre Meyrick	Gillian Petty	01446 773907
The VOG Coordinator	Stacey Evans	01446 450207

At the last meeting of the Neighbourhood Watch group held on the 26<sup>th</sup> Feb at the Barley Mow, the CPS Officer Hillary O'Callaghan was accompanied by her Service partner Steve. All were pleased to hear that we live in a very low crime area, with only two recorded theft crimes in the last two month period. One of those had been quickly resolved. There was a good discussion as usual, on how to continue to keep up the group profile. Being aware of new occupancies throughout the villages it was agreed that NW information would be provided with the free copy of the PENLLYN book. Along with this would be window stickers for those wanting to display them, and instructions on registering with the scheme. New stickers have been ordered so that anyone will be able to replace those that might have faded or been eaten by the dog. Please contact the Reps. If you need extras.

There may be some of you longer term villagers who are unaware if you are currently registered, we would ask you therefore to contact one of the area representatives on the above numbers. If we all just be aware of what is going on in the villages then we can continue to keep the crime rate to its pleasingly low level.

The next meeting with Hillary is on the 23<sup>rd</sup> April in the RED FOX, all villagers are welcome to come and share any relevant concerns.

### When to call 101?

You should call 101 to report crime and other concerns that do not require an emergency response. For more information see [www.ourbobby.com](http://www.ourbobby.com) or [www.south-wales.police.uk](http://www.south-wales.police.uk) or [www.neighbourhoodwatch.net](http://www.neighbourhoodwatch.net) or [www.safervale.co.uk](http://www.safervale.co.uk)

*Police Community Support Officer Hilary O'Callaghan, 07805 301416*

## Welcome

Welcome to anyone who has joined us recently. Please send me your email address and I will add you to my distribution list.

Penllyn, A Celebration of the History of a Vale of Glamorgan Community', written and published by the Craig and Penllyn Residents' Association is still for sale if you want to let your family and friends what a famous place you live in.

Copies are also available for sale

*If you are a resident and have not received your free copy of the book please contact Barbara Whitehouse on 774184*



**Cowbridge Compost Limited**

**Recycling the Vale and Swansea's  
leftover food and green wastes**

The Lodge, Llwynhelig, Cowbridge, Vale of Glamorgan CF71 7FF

# the barley mow

craig penllyn, cowbridge CF71 7RT 01446 72558

www.barleymow.net

barleypenllyn@aol.com

**Mon—Sat**

**12.00—2.30p.m. 6.00—9.00p.m.**

**Sunday**

**12.00—4.00 p.m.**

**\*\*\*New management\*\*\***

**2 main meals for £10 for our March Madness offer  
(Lunch Time offer)**

**Every Thursday - Steak Night - locally sourced welsh  
black rump or rib eye, including a drink from £12.95.**

**LIVE MUSIC - Friday 4th April. "Sker Krows " back by  
popular demand - FREE ENTRY! 8.30pm til Late.**

**We are now taking bookings Mothers' Day, 30th March,**

**Join us on FaceBook - barleypenllyn - where you can  
view recent pictures & look out for more offers &  
upcoming events.**

**Function room available Free of charge to hold those  
special occasions in quaint surroundings & open log  
fires, buffet/set menu available, tailored to your  
requirements.**





# **Red Fox Inn**

**Penllyn**

01446 772352

***'Open All Day, Every Day'***

## ***Food served :-***

Lunch 12 – 2.30p.m., Dinner 6.00 to 9.00p.m.

Saturday All Day, Sunday 12 – 8p.m.

Serving Home Cooked Food, a choice of Real Ales and Good Wines

## **Regular Events**

### **Wednesday Coffee Morning**

We open at 9.00am to welcome parents after the school run.

Coffee and cake £2.50 (50p goes to llangan School)

### **Every Bank Holiday**

Mussels and Ales Festival

Please book

### **Last Thursday Curry & Quiz Night**

Choice of 6 curries and limited bar meals

General Knowledge Quiz starts 9.00pm

Prize to the winner— a £20 voucher

**Visit our website - [www.redfoxinn.co.uk](http://www.redfoxinn.co.uk)**

*Richard, George and Fabien look forward to welcoming you xx*

Proud to be part of the Community - Support your local!!

## Christmas Lights Competition

The winners were:

1st price Julie and Phil Morgan, Hunters Lodge Craig Penllyn;

2nd price Gill and Eiryn Petty Afallon Penllyn;

3rd price Jennie and Dave Pepper, Oak Lodge Craig Penllyn.

## Noah's Ark Appeal

We raised £130 from the Christmas Greetings which appeared in the last issue of the newsletter. Many thanks to all who contributed

## Children's Christmas Party at the Red Fox

Thank you Mel for organising the party and George, Richard and Fabien for hosting it.

A great time was had by all as you can see from the photographs

*Elaine O'Connor*



### Your Local Company For All Your AV Needs

Sales · Installations · Repairs · Consultancy

Suppliers & Installers of Audio

Visual & CCTV Equipment.

BRIDGETEK SMS Boat Alarm.

Basic Boat Electrics Courses.



# Bridgework Ltd

Tel/Fax 01446 772077

[www.bridgeworkltd.co.uk](http://www.bridgeworkltd.co.uk)



Unit 31a, Vale Business Park, Llandow, Cowbridge, Vale of Glamorgan CF71 7PF

## New Years Day Village Walk

Can I thank everyone for their help toward in what were trying circumstances!! Well done to those who did the walk and for all of you that came and enjoyed your breakfast butties!! The concept of a village walk on New Year's Day is a very sound one, and on a sunny winter morning it would have been glorious, and no doubt much busier. Never mind- we did actually make some money- £125 ish. I will give the money to Rhiannon on Sunday. It was a good community event and only the weather was against us.

*Pam Harris*

What a wonderful village to live in! Hopefully next year we will be joined by many more. Fab idea and Dai's bacon and egg butties were just great.

*Kay and Lloyd and family*



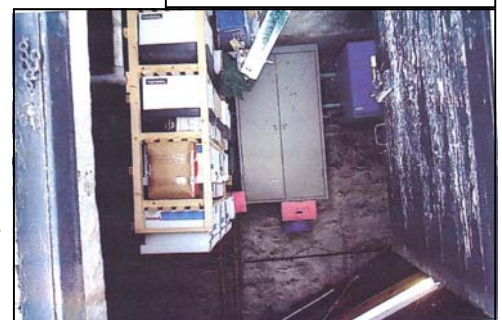
## St John's Church, Penllyn

Christmas has come and gone, and seems such a long time ago now- and thanks to all those who came to our services and made them so enjoyable and meaningful. As I write this we are going through Lent, a period of reflection leading to the joy of Easter. As always the church is open on Wednesdays in Lent 6.30 - 8.00pm for our Lenten evening- quiet music, candlelit calm, time to be still. Easter services are Maundy Thursday 7.30 pm at St Hilary for Passover Eucharist, Good Friday Liturgy of the Passion and Eucharist at Holy Cross 12.00, Holy Saturday 6pm TBA, then Easter Sunday 6.00am Son Rise Eucharist at Llanfrynach and 9.15am Eucharist at Penllyn. You are welcome at any and all of these services.

You may have noticed that we have started our building work in church, to create a new Community Room for the villages to use. We have knocked through between the vestry and boiler room and created a new kitchen, disabled toilet, and much improved storage area. The Vestry will now become a calm and comfortable room in which to hold meetings, groups, committees, clubs, or for anything you wish to- it is yours- please use it. For the mums with very young children it is somewhere you can meet up with others, without having to worry about the state your house is in, fancy running a book club/ knitting circle/ anything like that? Don't worry about whose house it's going to be in- use this. We are still trying to raise funds by applying for grants from organisations and charities, as it was a very large amount of money we needed to complete the job. We still need some more, so if you have any ideas for someone I can speak to please let me know.



Sunday School Tree



Work in progress



After the great success of our informal Harvest and Christmas services, we shall be having a Welcome to Spring Service, and we will advise date and time through the email system and website. The Alpha Course shall be starting after Easter and again, details will be advised nearer to the date. If you have any questions – please call us. If there is any particular service you would like us to do-again- just let us know- this is your church- have your say.

As a church, we continue to collect for the Pontyclun Foodbank, an organisation run by volunteers to help those in the area who have so little that they cannot even afford food. Thank you to those who already drop off food on a regular basis. We had an amazing collection for Llamau (the homeless teenager's charity, based in Bridgend) at Christmas, and shall be taking some more items to them at Easter. Anything you have would be most gratefully accepted- we collect in church, and you can drop off anytime- the key is always in the porch.

The Sunday School, family Eucharist and Coffee Morning is on the first Sunday of each month, at 9.15am, Morning worship- often taken by ourselves is on the 2<sup>nd</sup> Sunday at 11.00, 3<sup>rd</sup> and 5<sup>th</sup> Sunday are Eucharist at 9.15am, and 4<sup>th</sup> Sunday is Eucharist at 11.00. For those not sure about coming, please call either myself, or Rev'd Edward Dowland-Owen. Everyone is very welcome. Details in the Pews News displayed in the plastic container on the board, and inside church- please go in anytime you want.

*Your wardens are Anthony Powell 774170 and Pam Harris 772027, email meadcottage@talktalk.net*

*Rev'd Edward Dowland -Owen tel 775381*

## **Lent—Offering up the first fruits.**

Chapter 26 of the Book of Deuteronomy helps us to reflect on what can offer up to God. Do we give God the first fruits, or are we merely content to offer him what we have left over once we are satisfied. It may be true that most of us are not as connected to the land in terms of producing our own food as we the people at the time Deuteronomy was written, but we are all given blessings by God and need to think how we return that blessing to God.

In Lent we are encouraged to take time to consider our relationship with God our creator. How connected do we feel to God? What can we do to restore a right relationship with him? Lent is not however just about introspection and considering us and our spiritual needs as if they exist in some form of isolation. Rather it is a time to consider our relationship with God and our relationship with one another. As we begin the Lenten journey may God give us the grace to be faithful to consider deeply our relationship with him and with one another.

Every blessing and best wish

*Father Edward Dowland Owen*

## **Llanfrynach Church**

Key available at Cross Inn

## **Notices**

### **Local babysitters available.**

18 years old, student at Cowbridge Comprehensive, Trustworthy and reliable, own transport.

*Please contact: Emily Bonney, Home: 01446 773918, Mobile: 07753 170403'*

Babysitting service available and from mid-June availability for pet care/ gardening/ small manual jobs.

*Feel free to contact me on 07858028061 or 01446 771369. George Gibson*

### Dog sitter wanted

We are looking for anyone who would be interested or knows anyone who may be interested in looking after our lovely family dog for occasional weekends and/ or holidays. We have lost our lovely house sitter who has returned to her home country of Ireland and we miss her! We thought it may be that there could be someone in the village who may be interested or alternatively if any dog owners could let us know of any recommendations they have-we would be very grateful to hear from you..

*Sue and Clive Gibson. sueygibson@gmail.com 01446 771369 / 07512658177*

### Thanks

A big thank you to all my family and friends who helped me celebrate the big '70.' It was quite overwhelming to receive so many cards, gifts and flowers. I'm only just coming back down to earth!

Thank you to the Barley Mow for pulling out all the stops and making it a party to be remembered. Not just for me but also for my twin sister Christine. I've decided life begins at '70' and as a number of my friends will be joining me this year, its sounds as though its going to be a busy one.

Bring it on!!!

*Barbara Whitehouse*

*I hope to have some photos for the website. Val*

I am taking this opportunity to thank all the very kind people who were so concerned for me during my recent illness. Your cards and gifts were very much appreciated and I am deeply grateful. Thankfully I am making good progress and, except for a creek hers and there, I am fit

*With Best Wishes, Mary Llewellyn*

### Cycling from London to Paris in memory of Wendy Wright

Next April Rik Stevens, son-in-law of the late Wendy Wright of Penllyne, will be setting off from Crystal Palace in London to attempt something he never thought he would ever do - cycle to Paris. The biggest reason for doing this is to support a very worthwhile charity - Parkinson's UK.

The reason for choosing the Parkinson's UK charity is that he had close experience with someone who suffered with Parkinson's for 10 years before her untimely death in 2010. His mother in law, Wendy Wright, who was a special person who lit up the room when she entered and she enriched everyone's life who knew her.

Many of you will remember Wendy for her active participation in village life in both Craig Penllyne and Penllyne.. I know Rik and his wife Sue Stevens, would really appreciate your kind contributions to this worthwhile charity which will help one day find a cure for this horrible disease.

*www.justgiving.com/rik-stevens or Text RIKS99 followed by amount to 70070*



## Tŷ Hafan

Lots of my Craig and Penllyn friends and neighbours (but not all) know that I am an Ambassador for Tŷ Hafan, the only children's hospice service in South Wales and free to the eligible families in Wales that need it. I thought I would take this opportunity to let you all know a little more, perhaps than you already do, about our wonderful hospice and what I might do as a Volunteer/Ambassador in support of it.



Since 1999 Tŷ Hafan has been helping life-limited children, young people and their families make the most of the time they have left together.

Not only does Tŷ Hafan provide specialist palliative care, but it also offers a much-needed source of strength, support and short break care for the whole family. Tŷ Hafan takes its support right into the family home and is there to help these families through every step of their unimaginable journey. Tŷ Hafan's services are completely free of charge for families in Wales that need them.

Tŷ Hafan is not part of the health service and in 2011-2012 received just 10% statutory funding towards more than £3 million need to provide care and support to life-limited families in Wales. To continue to offer its unique service to families, it relies on the generosity of the public, its corporate sponsors and volunteers.

So, what do I do in my role as an Ambassador? Well, typically I will try and help out for one day a week at the head office administration in Sully, where in fact the hospice is also based. This keeps me in touch with fund raising and I am continually uplifted by the hard work and generosity of volunteers from businesses and individuals, without which we would be unable to offer this amazing service. I may be called upon to give a talk to people who have raised money and collect their cheques at a presentation. I also collect and exchange charity boxes in shops in and around Cowbridge. I try wherever possible to help lift the profile of Tŷ Hafan in ways such as the article you are reading and encourage people to volunteer when they have expressed an interest.

If reading this article has been of interest to you and you think you might like to get involved. I might suggest assisting at the Tŷ Hafan Emporium in the high street, personally donating pre-loved clothes for re-sale or holding an 'event' of your own to raise money and thereby continue to raise the profile of Tŷ Hafan. You could also take part in Tŷ Hafan events such as the Welsh 3 Peaks, the Taff Trail Challenge or Midnight sleep walk. There is also a Tŷ Hafan Lottery which costs just £1 a week to join. In any case, should you wish to find out more, please look at [www.tyhafan.org](http://www.tyhafan.org) or even phone me at home to arrange for a chat over a cup of coffee on 01446 775171.

Because you care, so can we.....

*Kay Davey at Village Farm*

## "The Magician"

The coin that flickered across his fingers,  
he found behind my ear.

The magic that he made still lingers,  
the coin that flickered across his fingers,  
like the ephemera of sixties' swingers.

A vanishing dove elicits a tear.

The coin that flickered across his fingers,  
he found behind my ear.

*Thank you Eiryn Petty for this triolette. (see the Autumn 2013 issue for details) .*

# OTAGO Classes

Penllyn Village Hall

Starts Friday 2<sup>nd</sup> May

Weekly Sessions 10.00am – 11.00pm

Cost £4.50



“This exercise programme has been shown to prevent falls by as much as 35 per cent and 54 per cent respectively. Appropriate for older people at high risk of falls.”

(Age UK report 2013)

Also at Llanbethian Village Hall.

Starts Friday 2<sup>nd</sup> May, Weekly Sessions 11.30am – 12.30pm Cost £4.50



# **Agenda for the Craig and Penllyne Village Committee Annual General Meeting**

**To be held on  
Wednesday 7<sup>th</sup> May 2014 commencing at 7.30 pm  
at Penllyn Village Hall**

**This is Joint AGM of the Village Hall Committee and the Residents Association**

- 1. Apologies for Absence**
- 2. Approval of Previous Minutes**
- 3. Chairman's Report - Lars Tiessen  
David Harris**
- 4. Treasurer's Report :-  
(A) Village Hall Committee Accounts - Jill Bonney  
(B) Residents Association Accounts - Jonathan Case**
- 5 Motion to Continue the Craig and Penllyn (Joint) Village Committee**
- 6. Election of Officers  
Chairman  
Vice Chairman  
Treasurer VHC accounts  
Treasurer RA accounts  
Secretary  
Committee members - up to 8.**

**Those willing to stand are asked to contact the secretary beforehand**

**Trustees of the Village Hall are automatically members**

## **7. AOB**

***Colin Parsons 01446 773818  
Secretary Village Joint Committee***

**Should any resident have a matter he/she wishes to raise, then a notice of motion duly proposed and seconded must be in the hands of the secretary by Monday 28th April 2014.**

**An amended agenda including the motion will then be posted on the notice boards giving the required notice.**